

A

Exceptional for any smooth flat or surface that will benefit from stability and fast response of the cup design. This is a multi-versatile and multi-industry cup. Typical applications could be chip mounting, electrical components, semiconductor chips, glass, injection mold, sheet metal, press transfer, fixtures, woodworking.

**Features**

- Precision molded single lip flat cup for smooth or slightly curved surfaces.
- Universal flat design for most smooth surface applications
- Stable vertical / horizontal lift
- Strong low profile design for fast response needed for short cycles
- 5mm to 200mm diameters
- Bottom cleats on 60 to 200mm diameters



**Styles**

- PFTM series male thread connector
- PFTF series female thread connector
- PFTK series barbed bulkhead
- PFYK series 90° barbed adapter
- PFTYS series bulkhead level compensator

**Specifications**

Cup material	Nitrile	Nitrile ESD*	Silicon	Silicon ESD*	Urethane
Material code	NBR	NBRE	SI	SIE	U
Operating temperature (°C)	-20° to +120°	0° to +60°	-60° to +250°	-10° to +130°	-20° to +75°
Color	Black	Black / Blue Dot	White	Black / Red Dot	Blue
Hardness, shore A (°Sh)	55 ±5	70 ±5	55 ±5	55 ±5	55 ±5
Electrical resistance (Ωm)	—	800 to 1000	—	5 to 15	—

\* ESD: Electric Static Dissipative Material

**How to order**

Cups Assemblies and replacement cups are specified by Cup Diameter and Material. Standard Nitrile and silicon are listed on the following pages. To specify an alternative material, replace the cup material with alternative cup material code.

**Example:** To specify a cup assembly with Urethane (U), replace (NBR) with (U) in the part number. PFTM-20B-NBR-G1 becomes PFTM-20B-U-G1. Inquire with factory for availability.

**Application guide**

**Flat - Smooth surface**



Ø 120/200 only

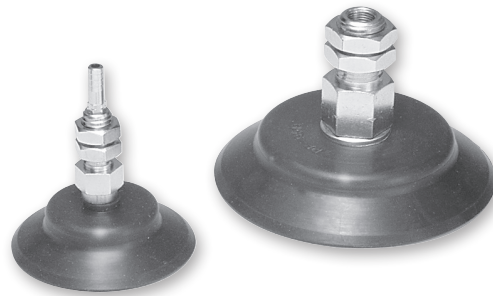
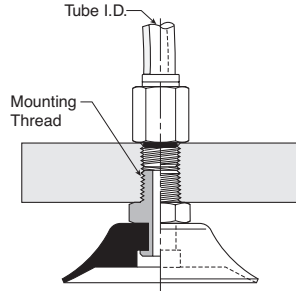
- Flat surface, thin section
- Flat surface, any section
- Slightly bowed surface, thin section
- Slightly bowed surface, any section
- Metal sheet handling
- Corrugated sheet handling
- High lifting force
- Vertical lift

**PFTM Series Male Thread Connector**

Simple male connection for low profile positions secured to a plate or bracket. NPT, G, metric threads.  
 Fitting material: aluminum.

**Installation**

**Note:**  
 When installing cup assemblies, use a sealant material to secure the assembly and prevent vacuum leakage.



Cup diameter (mm)	Vacuum port	Complete assembly Nitrile (NBR)	Replacement cup Nitrile (NBR)	Complete assembly Silicon (SI)	Replacement cup Silicon (SI)	Replacement cup fitting
5	M5	<b>PFTM-5A-NBR-M5</b>	<b>PFG-5A-NBR</b>	PFTM-5A-SI-M5	<b>PFG-5A-SI</b>	<b>FTM-5A-M5H</b>
5	1/8 BSPP	<b>PFTM-5A-NBR-G1</b>	<b>PFG-5A-NBR</b>	PFTM-5A-SI-G1	<b>PFG-5A-SI</b>	<b>FTM-5A-G1</b>
6	M5	<b>PFTM-6A-NBR-M5</b>	<b>PFG-6A-NBR</b>	PFTM-6A-SI-M5	<b>PFG-6A-SI</b>	<b>FTM-5A-M5H</b>
6	1/8 BSPP	<b>PFTM-6A-NBR-G1</b>	<b>PFG-6A-NBR</b>	PFTM-6A-SI-G1	<b>PFG-6A-SI</b>	<b>FTM-5A-G1</b>
8	M5	<b>PFTM-8A-NBR-M5</b>	<b>PFG-8A-NBR</b>	PFTM-8A-SI-M5	<b>PFG-8A-SI</b>	<b>FTM-5A-M5H</b>
8	1/8 BSPP	<b>PFTM-8A-NBR-G1</b>	<b>PFG-8A-NBR</b>	PFTM-8A-SI-G1	<b>PFG-8A-SI</b>	<b>FTM-5A-G1</b>
10	M5	<b>PFTM-10A-NBR-M5</b>	<b>PFG-10A-NBR</b>	PFTM-10A-SI-M5	<b>PFG-10A-SI</b>	<b>FTM-5A-M5H</b>
10	1/8 BSPP	<b>PFTM-10A-NBR-G1</b>	<b>PFG-10A-NBR</b>	PFTM-10A-SI-G1	<b>PFG-10A-SI</b>	<b>FTM-5A-G1</b>
15	M5	<b>PFTM-15A-NBR-M5</b>	<b>PFG-15A-NBR</b>	PFTM-15A-SI-M5	<b>PFG-15A-SI</b>	<b>FTM-5A-M5H</b>
15	1/8 BSPP	<b>PFTM-15A-NBR-G1</b>	<b>PFG-15A-NBR</b>	PFTM-15A-SI-G1	<b>PFG-15A-SI</b>	<b>FTM-5A-G1</b>
20	1/8 BSPP	<b>PFTM-20B-NBR-G1</b>	<b>PFG-20B-NBR</b>	PFTM-20B-SI-G1	<b>PFG-20B-SI</b>	<b>FTM-20B-G1H</b>
20	1/4 BSPP	<b>PFTM-20B-NBR-G2</b>	<b>PFG-20B-NBR</b>	<b>PFTM-20B-SI-G2</b>	<b>PFG-20B-SI</b>	<b>FTM-20B-G2</b>
20	M10	PFTM-20B-NBR-M10	<b>PFG-20B-NBR</b>	PFTM-20B-SI-M10	<b>PFG-20B-SI</b>	FTM-20B-M10
20	1/8 NPT	<b>PFTM-20B-NBR-N1</b>	<b>PFG-20B-NBR</b>	PFTM-20B-SI-N1	<b>PFG-20B-SI</b>	<b>FTM-20B-N1</b>
30	1/8 BSPP	<b>PFTM-30-NBR-G1</b>	<b>PFG-30-NBR</b>	PFTM-30-SI-G1	PFG-30-SI	<b>FTM-20B-G1H</b>
30	1/4 BSPP	<b>PFTM-30-NBR-G2</b>	<b>PFG-30-NBR</b>	PFTM-30-SI-G2	PFG-30-SI	<b>FTM-20B-G2</b>
30	M10	PFTM-30-NBR-M10	<b>PFG-30-NBR</b>	PFTM-30-SI-M10	PFG-30-SI	FTM-20B-M10
30	1/8 NPT	<b>PFTM-30-NBR-N1</b>	<b>PFG-30-NBR</b>	PFTM-30-SI-N1	PFG-30-SI	<b>FTM-20B-N1</b>
40	1/8 BSPP	<b>PFTM-40-NBR-G1</b>	<b>PFG-40-NBR</b>	PFTM-40-SI-G1	PFG-40-SI	<b>FTM-20B-G1H</b>
40	1/4 BSPP	<b>PFTM-40-NBR-G2</b>	<b>PFG-40-NBR</b>	PFTM-40-SI-G2	PFG-40-SI	<b>FTM-20B-G2</b>
40	M10	PFTM-40-NBR-M10	<b>PFG-40-NBR</b>	PFTM-40-SI-M10	PFG-40-SI	FTM-20B-M10
40	1/8 NPT	<b>PFTM-40-NBR-N1</b>	<b>PFG-40-NBR</b>	PFTM-40-SI-N1	PFG-40-SI	<b>FTM-20B-N1</b>
50	1/8 BSPP	<b>PFTM-50-NBR-G1</b>	<b>PFG-50-NBR</b>	PFTM-50-SI-G1	PFG-50-SI	<b>FTM-50-G1H</b>
50	1/4 BSPP	<b>PFTM-50-NBR-G2</b>	<b>PFG-50-NBR</b>	PFTM-50-SI-G2	PFG-50-SI	<b>FTM-50-G2</b>
50	1/8 NPT	PFTM-50-NBR-N1	<b>PFG-50-NBR</b>	PFTM-50-SI-N1	PFG-50-SI	FTM-50-N1
60	1/4 BSPP	<b>PFTM-60-NBR-G2</b>	<b>PFG-60-NBR</b>	PFTM-60-SI-G2	PFG-60-SI	<b>FTM-60-G2</b>
60	M10	PFTM-60-NBR-M10	<b>PFG-60-NBR</b>	PFTM-60-SI-M10	PFG-60-SI	FTM-60-M10
60	1/4 NPT	<b>PFTM-60-NBR-N2</b>	<b>PFG-60-NBR</b>	PFTM-60-SI-N2	PFG-60-SI	<b>FTM-60-N2</b>
80	1/4 BSPP	<b>PFTM-80-NBR-G2</b>	<b>PFG-80-NBR</b>	PFTM-80-SI-G2	PFG-80-SI	<b>FTM-60-G2</b>
80	M10	PFTM-80-NBR-M10	<b>PFG-80-NBR</b>	PFTM-80-SI-M10	PFG-80-SI	FTM-60-M10
80	1/4 NPT	<b>PFTM-80-NBR-N2</b>	<b>PFG-80-NBR</b>	PFTM-80-SI-N2	PFG-80-SI	<b>FTM-60-N2</b>
95	1/4 BSPP	<b>PFTM-95-NBR-G2</b>	<b>PFG-95-NBR</b>	PFTM-95-SI-G2	PFG-95-SI	<b>FTM-60-G2</b>
95	M10	PFTM-95-NBR-M10	<b>PFG-95-NBR</b>	PFTM-95-SI-M10	PFG-95-SI	FTM-60-M10
95	1/4 NPT	<b>PFTM-95-NBR-N2</b>	<b>PFG-95-NBR</b>	PFTM-95-SI-N2	PFG-95-SI	<b>FTM-60-N2</b>

Most popular.



**A**

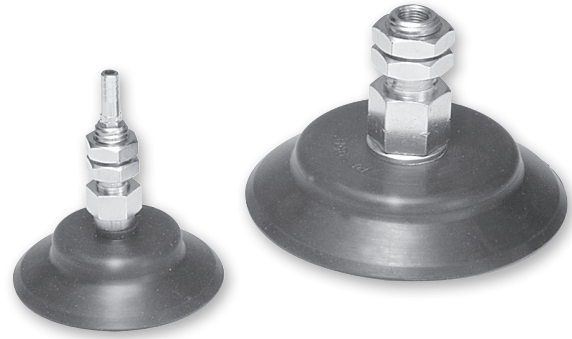
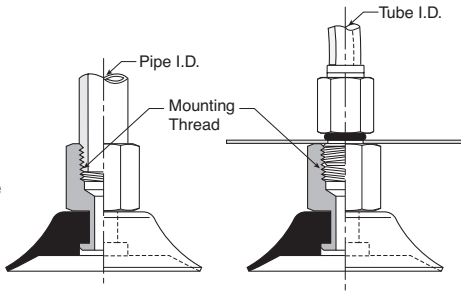
**PFTF Series Female Thread Connector**

Simple female connection for low profile positions secured to a plate or bracket. NPSF, G threads. Fitting material: aluminum.

**Installation**

**Note:**

When installing cup assemblies, use a sealant material to secure the assembly and prevent vacuum leakage.



Cup diameter (mm)	Vacuum port	Complete assembly Nitrile (NBR)	Replacement cup Nitrile (NBR)	Complete assembly Silicon (SI)	Replacement cup Silicon (SI)	Replacement cup fitting
5	M5	<b>PFTF-5A-NBR-M5</b>	PFG-5A-NBR	<b>PFTF-5A-SI-M5</b>	PFG-5A-SI	<b>FTF-5A-M5</b>
5	1/8 BSPP	<b>PFTF-5A-NBR-G1</b>	PFG-5A-NBR	<b>PFTF-5A-SI-G1</b>	PFG-5A-SI	<b>FTF-5A-G1</b>
6	M5	<b>PFTF-6A-NBR-M5</b>	PFG-6A-NBR	<b>PFTF-6A-SI-M5</b>	PFG-6A-SI	<b>FTF-5A-M5</b>
6	1/8 BSPP	<b>PFTF-6A-NBR-G1</b>	PFG-6A-NBR	<b>PFTF-6A-SI-G1</b>	PFG-6A-SI	<b>FTF-5A-G1</b>
8	M5	<b>PFTF-8A-NBR-M5</b>	PFG-8A-NBR	<b>PFTF-8A-SI-M5</b>	PFG-8A-SI	<b>FTF-5A-M5</b>
8	1/8 BSPP	<b>PFTF-8A-NBR-G1</b>	PFG-8A-NBR	<b>PFTF-8A-SI-G1</b>	PFG-8A-SI	<b>FTF-5A-G1</b>
10	1/8 BSPP	<b>PFTF-10A-NBR-G1</b>	PFG-10A-NBR	<b>PFTF-10A-SI-G1</b>	PFG-10A-SI	<b>FTF-5A-G1</b>
10	M5	<b>PFTF-10A-NBR-M5</b>	PFG-10A-NBR	<b>PFTF-10A-SI-M5</b>	PFG-10A-SI	<b>FTF-5A-M5</b>
15	1/8 BSPP	<b>PFTF-15A-NBR-G1</b>	PFG-15A-NBR	<b>PFTF-15A-SI-G1</b>	PFG-15A-SI	<b>FTF-5A-G1</b>
15	M5	<b>PFTF-15A-NBR-M5</b>	PFG-15A-NBR	<b>PFTF-15A-SI-M5</b>	PFG-15A-SI	<b>FTF-5A-M5</b>
20	1/8 BSPP	<b>PFTF-20B-NBR-G1</b>	<b>PFG-20B-NBR</b>	<b>PFTF-20B-SI-G1</b>	<b>PFG-20B-SI</b>	<b>FTF-20B-G1</b>
30	1/8 BSPP	<b>PFTF-30-NBR-G1</b>	<b>PFG-30-NBR</b>	<b>PFTF-30-SI-G1</b>	<b>PFG-30-SI</b>	<b>FTF-20B-G1</b>
30	1/4 BSPP	PFTF-30-NBR-G2	PFG-30-NBR	PFTF-30-SI-G2	PFG-30-SI	FTF-20B-G2
40	1/8 BSPP	<b>PFTF-40-NBR-G1</b>	<b>PFG-40-NBR</b>	<b>PFTF-40-SI-G1</b>	<b>PFG-40-SI</b>	<b>FTF-20B-G1</b>
40	1/4 BSPP	PFTF-40-NBR-G2	PFG-40-NBR	PFTF-40-SI-G2	PFG-40-SI	FTF-20B-G2
50	1/8 BSPP	PFTF-50-NBR-G1	PFG-50-NBR	PFTF-50-SI-G1	PFG-50-SI	FTF-50-G1
50	1/4 BSPP	PFTF-50-NBR-G2	PFG-50-NBR	PFTF-50-SI-G2	PFG-50-SI	FTF-50-G2
60	1/4 BSPP	<b>PFTF-60-NBR-G2</b>	<b>PFG-60-NBR</b>	PFTF-60-SI-G2	PFG-60-SI	<b>FTF-60-G2</b>
60	1/4 NPT	<b>PFTF-60-NBR-N2</b>	<b>PFG-60-NBR</b>	PFTF-60-SI-N2	PFG-60-SI	<b>FTF-60-N2</b>
80	1/4 BSPP	<b>PFTF-80-NBR-G2</b>	<b>PFG-80-NBR</b>	PFTF-80-SI-G2	PFG-80-SI	<b>FTF-60-G2</b>
80	1/4 NPT	<b>PFTF-80-NBR-N2</b>	<b>PFG-80-NBR</b>	PFTF-80-SI-N2	PFG-80-SI	<b>FTF-60-N2</b>
95	1/4 NPT	<b>PFTF-95-NBR-N2</b>	<b>PFG-95-NBR</b>	PFTF-95-SI-N2	PFG-95-SI	<b>FTF-60-N2</b>
95	1/4 BSPP	<b>PFTF-95-NBR-G2</b>	<b>PFG-95-NBR</b>	PFTF-95-SI-G2	PFG-95-SI	<b>FTF-60-G2</b>
120	1/2 BSPP	PFTF-120-NBR-G4	PFG-120-NBR	PFTF-120-SI-G4	PFG-120-SI	<b>FTF-120-G4</b>
120	1/2 NPT	PFTF-120-NBR-N4	PFG-120-NBR	PFTF-120-SI-N4	PFG-120-SI	<b>FTF-120-N4</b>
150	1/2 NPT	<b>PFTF-150-NBR-G4</b>	<b>PFG-150-NBR</b>	PFTF-150-SI-G4	PFG-150-SI	<b>FTF-120-G4</b>
150	1/2 NPT	<b>PFTF-150-NBR-N4</b>	<b>PFG-150-NBR</b>	PFTF-150-SI-N4	PFG-150-SI	<b>FTF-120-N4</b>
200	1/2 BSPP	<b>PFTF-200-NBR-G4</b>	<b>PFG-200-NBR</b>	PFTF-200-SI-G4	PFG-200-SI	<b>FTF-120-G4</b>
200	1/2 NPT	<b>PFTF-200-NBR-N4</b>	<b>PFG-200-NBR</b>	PFTF-200-SI-N4	PFG-200-SI	<b>FTF-120-N4</b>

■ Most popular.

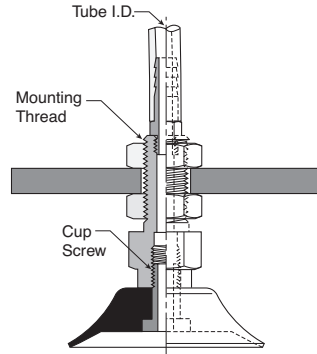


**PFTK Series Barbed Bulkhead**

Top stem connectors secured with jam nuts and allow tubing connections at the top side. Fitting material: nickel plated brass.

**Installation**

**Note:**  
 When installing cup assemblies, use a sealant material to secure the assembly and prevent vacuum leakage.



Cup diameter (mm)	Vacuum port	Complete assembly Nitrile (NBR)	Replacement cup Nitrile (NBR)	Complete assembly Silicon (SI)	Replacement cup Silicon (SI)	Replacement cup fitting
5	Barb	<b>PFTK-5A-NBR</b>	<b>PFG-5A-NBR</b>	<b>PFTK-5A-SI</b>	<b>PFG-5A-SI</b>	<b>FTK-5A</b>
6	Barb	<b>PFTK-6A-NBR</b>	<b>PFG-6A-NBR</b>	<b>PFTK-6A-SI</b>	<b>PFG-6A-SI</b>	<b>FTK-5A</b>
8	Barb	<b>PFTK-8A-NBR</b>	<b>PFG-8A-NBR</b>	<b>PFTK-8A-SI</b>	<b>PFG-8A-SI</b>	<b>FTK-5A</b>
10	Barb	<b>PFTK-10A-NBR</b>	<b>PFG-10A-NBR</b>	<b>PFTK-10A-SI</b>	<b>PFG-10A-SI</b>	<b>FTK-5A</b>
15	Barb	<b>PFTK-15-NBR</b>	<b>PFG-15-NBR</b>	<b>PFTK-15-SI</b>	<b>PFG-15-SI</b>	<b>FTK-15</b>
20	Barb	<b>PFTK-20-NBR</b>	<b>PFG-20-NBR</b>	<b>PFTK-20-SI</b>	<b>PFG-20-SI</b>	<b>FTK-20</b>
30	Barb	<b>PFTK-30-NBR</b>	<b>PFG-30-NBR</b>	<b>PFTK-30-SI</b>	<b>PFG-30-SI</b>	<b>FTK-25</b>
40	Barb	<b>PFTK-40-NBR</b>	<b>PFG-40-NBR</b>	<b>PFTK-40-SI</b>	<b>PFG-40-SI</b>	<b>FTK-25</b>
50	Barb	<b>PFTK-50-NBR</b>	<b>PFG-50-NBR</b>	<b>PFTK-50-SI</b>	<b>PFG-50-SI</b>	<b>FTK-50</b>
60	1/8 BSPP	<b>PFTK-60-NBR-G1</b>	<b>PFG-60-NBR</b>	<b>PFTK-60-SI-G1</b>	<b>PFG-60-SI</b>	<b>FTK-60-G1</b>
60	1/8 NPT	<b>PFTK-60-NBR-N1</b>	<b>PFG-60-NBR</b>	<b>PFTK-60-SI-N1</b>	<b>PFG-60-SI</b>	<b>FTK-60-N1</b>
80	1/8 BSPP	<b>PFTK-80-NBR-G1</b>	<b>PFG-80-NBR</b>	<b>PFTK-80-SI-G1</b>	<b>PFG-80-SI</b>	<b>FTK-60-G1</b>
80	1/8 NPT	<b>PFTK-80-NBR-N1</b>	<b>PFG-80-NBR</b>	<b>PFTK-80-SI-N1</b>	<b>PFG-80-SI</b>	<b>FTK-60-N1</b>
95	1/8 BSPP	<b>PFTK-95-NBR-G1</b>	<b>PFG-95-NBR</b>	<b>PFTK-95-SI-G1</b>	<b>PFG-95-SI</b>	<b>FTK-60-G1</b>
95	1/8 NPT	<b>PFTK-95-NBR-N1</b>	<b>PFG-95-NBR</b>	<b>PFTK-95-SI-N1</b>	<b>PFG-95-SI</b>	<b>FTK-60-N1</b>

<b>A</b>
Technical
PFG Flat
PBG Bellows
P5V-CFS Flat
PJG Short Bellows
PCG Multiple Bellows
PUGB Flat Swivel
Cup Fittings

■ Most popular.



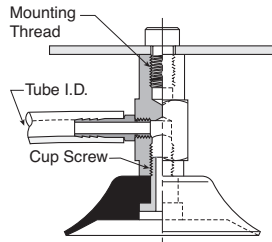
**PFYK Series 90° Barbed Adapter**

Side stem connectors allow you to secure the stem with a bolt thru a plate or "L" bracket to allow the tube connection from the side port. Fitting material: nickel plated brass.

**Installation**

**Note:**

When installing cup assemblies, use a sealant material to secure the assembly and prevent vacuum leakage.



Cup diameter (mm)	Vacuum port	Complete assembly Nitrile (NBR)	Replacement cup Nitrile (NBR)	Complete assembly Silicon (SI)	Replacement cup Silicon (SI)	Replacement cup fitting
5	Barb	<b>PFYK-5A-NBR</b>	<b>PFG-5A-NBR</b>	<b>PFYK-5A-SI</b>	<b>PFG-5A-SI</b>	<b>FYK-5A</b>
6	Barb	<b>PFYK-6A-NBR</b>	<b>PFG-6A-NBR</b>	<b>PFYK-6A-SI</b>	<b>PFG-6A-SI</b>	<b>FYK-5A</b>
8	Barb	<b>PFYK-8A-NBR</b>	<b>PFG-8A-NBR</b>	<b>PFYK-8A-SI</b>	<b>PFG-8A-SI</b>	<b>FYK-5A</b>
10	Barb	<b>PFYK-10A-NBR</b>	<b>PFG-10A-NBR</b>	<b>PFYK-10A-SI</b>	<b>PFG-10A-SI</b>	<b>FYK-5A</b>
15	Barb	<b>PFYK-15-NBR</b>	<b>PFG-15-NBR</b>	<b>PFYK-15-SI</b>	<b>PFG-15-SI</b>	<b>FYK-15</b>
20	Barb	<b>PFYK-20-NBR</b>	<b>PFG-20-NBR</b>	<b>PFYK-20-SI</b>	<b>PFG-20-SI</b>	<b>FYK-20</b>
30	Barb	<b>PFYK-30-NBR</b>	<b>PFG-30-NBR</b>	<b>PFYK-30-SI</b>	<b>PFG-30-SI</b>	<b>FYK-25</b>
40	Barb	<b>PFYK-40-NBR</b>	<b>PFG-40-NBR</b>	<b>PFYK-40-SI</b>	<b>PFG-40-SI</b>	<b>FYK-25</b>
50	Barb	<b>PFYK-50-NBR</b>	<b>PFG-50-NBR</b>	PFYK-50-SI	PFG-50-SI	<b>FYK-50</b>
60	1/8 BSPP	PFYK-60-NBR-G1	<b>PFG-60-NBR</b>	PFYK-60-SI-G1	PFG-60-SI	FYK-60-G1
60	1/8 NPT	<b>PFYK-60-NBR-N1</b>	<b>PFG-60-NBR</b>	PFYK-60-SI-N1	PFG-60-SI	<b>FYK-60-N1</b>
80	1/8 BSPP	PFYK-80-NBR-G1	<b>PFG-80-NBR</b>	PFYK-80-SI-G1	PFG-80-SI	FYK-60-G1
80	1/8 NPT	<b>PFYK-80-NBR-N1</b>	<b>PFG-80-NBR</b>	PFYK-80-SI-N1	PFG-80-SI	<b>FYK-60-N1</b>
95	1/8 BSPP	PFYK-95-NBR-G1	<b>PFG-95-NBR</b>	PFYK-95-SI-G1	PFG-95-SI	FYK-60-G1
95	1/8 NPT	<b>PFYK-95-NBR-N1</b>	<b>PFG-95-NBR</b>	PFYK-95-SI-N1	PFG-95-SI	<b>FYK-60-N1</b>
120	1/8 BSPP	PFYK-120-NBR-G1	PFG-120-NBR	PFYK-120-SI-G1	PFG-120-SI	FYK-120-G1
120	1/8 NPT	<b>PFYK-120-NBR-N1</b>	<b>PFG-120-NBR</b>	PFYK-120-SI-N1	PFG-120-SI	<b>FYK-120-N1</b>
150	1/8 BSPP	PFYK-150-NBR-G1	PFG-150-NBR	PFYK-150-SI-G1	PFG-150-SI	FYK-120-G1
150	1/8 NPT	<b>PFYK-150-NBR-N1</b>	<b>PFG-150-NBR</b>	PFYK-150-SI-N1	PFG-150-SI	<b>FYK-120-N1</b>
200	1/8 BSPP	PFYK-200-NBR-G1	PFG-200-NBR	PFYK-200-SI-G1	PFG-200-SI	FYK-120-G1
200	1/8 NPT	<b>PFYK-200-NBR-N1</b>	<b>PFG-200-NBR</b>	PFYK-200-SI-N1	PFG-200-SI	<b>FYK-120-N1</b>

■ Most popular.



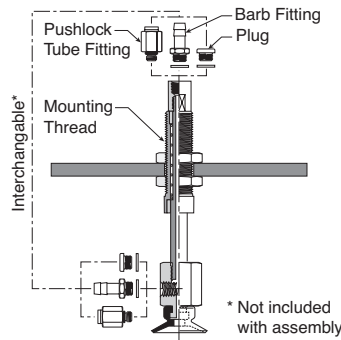
**PFTYS Series Bulkhead Level Compensator**

303 stainless steel construction secured with jam nuts. Spring biased compensators can absorb impacts of down-strokes and adjust for different levels of pick up points. 303 stainless corrosion resistant materials with drymet bushings increases the strength and life.

**Installation**

**Note:**

When installing cup assemblies, use a sealant material to secure the assembly and prevent vacuum leakage.



Cup dia. (mm)	Vacuum port	Stroke (mm)	Spring compression Force lbf (N)		Cup material Nitrile assembly (NBR)	Replacement cup Nitrile (NBR)	Cup material Silicon assembly (SI)	Replacement cup Silicon (SI)	Level Compensator P/N
			0%	100%					
5	M5	10	.14 (.61)	.26 (1.17)	PFTYS5A10NBRM5	PFG-5A-NBR	PFTYS5A10SIM5	PFG-5A-SI	TYS-5A-10
5	M5	15	.15 (.64)	.26 (1.17)	PFTYS5A15NBRM5	PFG-5A-NBR	PFTYS5A15SIM5	PFG-5A-SI	TYS-5A-15
6	M5	10	.14 (.61)	.26 (1.17)	PFTYS6A10NBRM5	PFG-6A-NBR	PFTYS6A10SIM5	PFG-6A-SI	TYS-5A-10
6	M5	15	.15 (.64)	.26 (1.17)	PFTYS6A15NBRM5	PFG-6A-NBR	PFTYS6A15SIM5	PFG-6A-SI	TYS-5A-15
8	M5	10	.14 (.61)	.26 (1.17)	PFTYS8A10NBRM5	PFG-8A-NBR	PFTYS8A10SIM5	PFG-8A-SI	TYS-5A-10
8	M5	15	.15 (.64)	.26 (1.17)	PFTYS8A15NBRM5	PFG-8A-NBR	PFTYS8A15SIM5	PFG-8A-SI	TYS-5A-15
10	M5	10	.11 (.49)	.13 (.59)	PFTYS10A10NBRM5	PFG-10A-NBR	PFTYS10A10SIM5	PFG-10A-SI	TYS-5A-10
10	M5	15	.11 (.49)	.13 (.59)	PFTYS10A15NBRM5	PFG-10A-NBR	PFTYS10A15SIM5	PFG-10A-SI	TYS-5A-15
15	M5	10	.11 (.49)	.13 (.59)	PFTYS15A10NBRM5	PFG-15A-NBR	PFTYS15A10SIM5	PFG-15A-SI	TYS-5A-10
15	M5	15	.11 (.49)	.13 (.59)	PFTYS15A15NBRM5	PFG-15A-NBR	PFTYS15A15SIM5	PFG-15A-SI	TYS-5A-15
20	M5	15	.56 (2.5)	.79 (3.4)	PFTYS20B15NBRM5	PFG-20B-NBR	PFTYS20B15SIM5	PFG-20B-SI	TYS-20B-15
20	M5	30	.56 (2.5)	1.2 (4.9)	PFTYS20B30NBRM5	PFG-20B-NBR	PFTYS20B30SIM5	PFG-20B-SI	TYS-20B-30
30	M5	15	.56 (2.5)	.79 (3.4)	PFTYS3015NBRM5	PFG-30-NBR	PFTYS3015SIM5	PFG-30-SI	TYS-20B-15
30	M5	30	.56 (2.5)	1.2 (4.9)	PFTYS3030NBRM5	PFG-30-NBR	PFTYS3030SIM5	PFG-30-SI	TYS-20B-30
40	M5	15	.56 (2.5)	.79 (3.4)	PFTYS4015NBRM5	PFG-40-NBR	PFTYS4015SIM5	PFG-40-SI	TYS-20B-15
40	M5	30	.56 (2.5)	1.2 (4.9)	PFTYS4030NBRM5	PFG-40-NBR	PFTYS4030SIM5	PFG-40-SI	TYS-20B-30
50	M5	15	.56 (2.5)	1.2 (4.9)	PFTYS5015NBRM5	PFG-50-NBR	PFTYS5015SIM5	PFG-50-SI	TYS-50-15
50	M5	30	.67 (2.9)	1.4 (5.9)	PFTYS5030NBRM5	PFG-50-NBR	PFTYS5030SIM5	PFG-50-SI	TYS-50-30
60	1/8 NPT	30	1.6 (6.8)	3.6 (15.6)	PFTYS6030NBRN1	PFG-60-NBR	PFTYS6030SIN1	PFG-60-SI	TYS-60-30
60	1/8 NPT	50	1.9 (8.3)	4.5 (19.6)	PFTYS6050NBRN1	PFG-60-NBR	PFTYS6050SIN1	PFG-60-SI	TYS-60-50
80	1/8 NPT	30	1.6 (6.8)	3.6 (15.6)	PFTYS8030NBRN1	PFG-80-NBR	PFTYS8030SIN1	PFG-80-SI	TYS-60-30
80	1/8 NPT	50	1.9 (8.3)	4.5 (19.6)	PFTYS8050NBRN1	PFG-80-NBR	PFTYS8050SIN1	PFG-80-SI	TYS-60-50
95	1/8 NPT	30	1.6 (6.8)	3.6 (15.6)	PFTYS9530NBRN1	PFG-95-NBR	PFTYS9530SIN1	PFG-95-SI	TYS-60-30
95	1/8 NPT	50	1.9 (8.3)	4.5 (19.6)	PFTYS9550NBRN1	PFG-95-NBR	PFTYS9550SIN1	PFG-95-SI	TYS-60-50
120	1/4 NPT	20	3.6 (15.6)	6.8 (29)	PFTYS12020NBRN2	PFG-120-NBR	PFTYS12020SIN2	PFG-120-SI	TYS-120-20
120	1/4 NPT	70	3.4 (14.7)	6.8 (29)	PFTYS12070NBRN2	PFG-120-NBR	PFTYS12070SIN2	PFG-120-SI	TYS-120-70
150	1/4 NPT	20	3.6 (15.6)	6.8 (29)	PFTYS15020NBRN2	PFG-150-NBR	PFTYS15020SIN2	PFG-150-SI	TYS-120-20
150	1/4 NPT	70	3.4 (14.7)	6.8 (29)	PFTYS15070NBRN2	PFG-150-NBR	PFTYS15070SIN2	PFG-150-SI	TYS-120-70
200	1/4 NPT	20	3.6 (15.6)	6.8 (29)	PFTYS20020NBRN2	PFG-200-NBR	PFTYS20020SIN2	PFG-200-SI	TYS-120-20
200	1/4 NPT	70	3.4 (14.7)	6.8 (29)	PFTYS20070NBRN2	PFG-200-NBR	PFTYS20070SIN2	PFG-200-SI	TYS-120-70

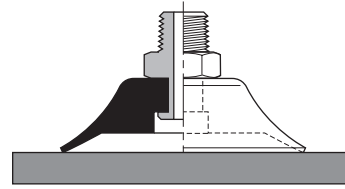
Most popular.



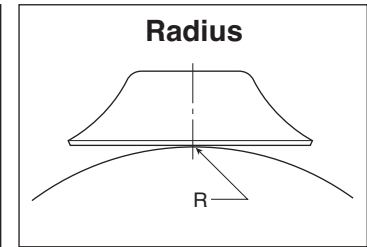
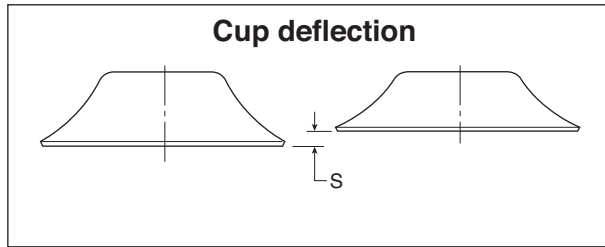
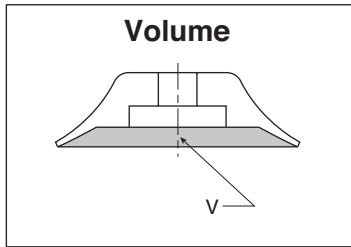
A

Applications

- Products with smooth surfaces
- Products with minimum flex
- Products that will not permanently deform



Main data for fat PFG cups

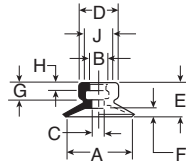


Model number	Cup diameter inches (mm)	Area cm <sup>2</sup>	Volume (V) liters	Lifting force @60% (N)		Cup deflection (S) mm	Radius (R) mm
PFG-5A-*	.20 (5)	0.20	0.000005	1.20	0.6	0.5	3.5
PFG-6A-*	.24 (6)	0.28	0.000008	1.70	0.85	1.0	4.0
PFG-8A-*	.31 (8)	0.50	0.00003	3.10	1.5	1.4	5.0
PFG-10A-*	.39 (10)	0.79	0.00007	4.80	2.4	1.5	6.0
PFG-15-*	.59 (15)	1.77	0.0004	10.8	5.4	1.9	6.0
PFG-15A-*	.59 (15)	1.77	0.0004	10.8	5.4	1.9	6.0
PFG-20-*	.79 (20)	3.14	0.0008	19.2	9.6	2.3	9.0
PFG-20B-*	.79 (20)	3.14	0.0008	19.2	9.6	2.3	13.0
PFG-30-*	1.18 (30)	7.07	0.0018	43.2	21.6	2.0	26
PFG-40-*	1.57 (40)	12.60	0.004	76.9	38.5	3.5	37
PFG-50-*	1.97 (50)	19.60	0.007	120	60	4.0	41
PFG-60-*	2.36 (60)	28.30	0.0090	173	87	5.0	70
PFG-80-*	3.15 (80)	50.30	0.025	308	154	6.0	100
PFG-95-*	3.74 (95)	70.90	0.035	434	267	6.0	150
PFG-120-*	4.72 (120)	113.00	0.078	692	346	6.0	365
PFG-150-*	5.91 (150)	176.70	0.177	1081	541	9.0	380
PFG-200-*	7.87 (200)	314.20	0.425	1922	961	13.0	430

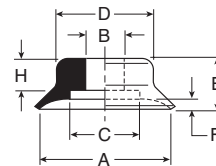
\* Cup material

**PFG Series Replacement Cup Dimensions**

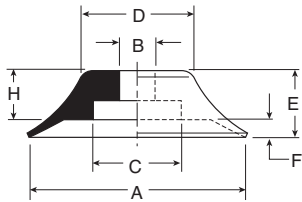
**PFG-5A  
PFG-15A**



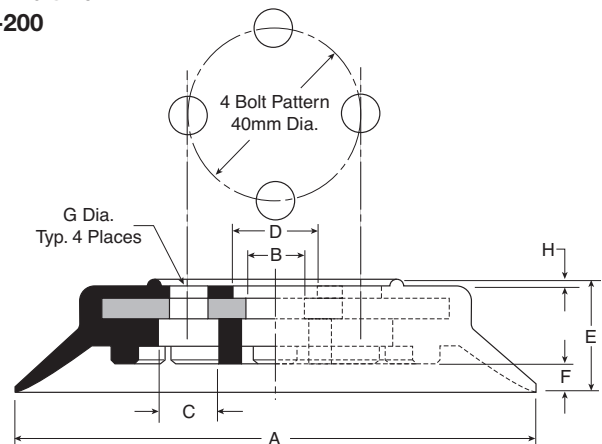
**PFG-15 thru  
PFG-40**



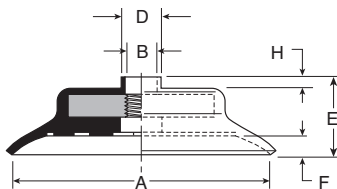
**PFG-50**



**PFG-120 thru  
PFG-200**



**PFG-60 thru  
PFG-95**



Model number	ØA	ØB	ØC	ØD	E	F	G	H	ØJ
PFG-5A*	.20 (5)	.16 (4)	.06 (1.4)	.30 (7.5)	.26 (6.5)	.03 (.8)	.16 (4)	.08 (2)	.24 (6)
PFG-6A*	.24 (6)	.16 (4)	.08 (2)	.30 (7.5)	.26 (6.5)	.03 (.8)	.16 (4)	.08 (2)	.24 (6)
PFG-8A*	.31 (8)	.16 (4)	.08 (2)	.31 (8)	.28 (7)	.05 (1.2)	.16 (4)	.08 (2)	.24 (6)
PFG-10A*	.39 (10)	.16 (4)	.08 (2)	.33 (8.5)	.30 (7.5)	.06 (1.5)	.16 (4)	.08 (2)	.24 (6)
PFG-15*	.59 (15)	—	.31 (7.8)	.47 (12)	.31 (8)	.07 (1.9)	—	—	—
PFG-15A*	.59 (15)	.16 (4)	.08 (2)	.35 (9)	.31 (8)	.08 (2)	.16 (4)	.08 (2)	.24 (6)
PFG-20*	.79 (20)	.18 (4.6)	.43 (11)	.59 (15)	.39 (10)	.09 (2.3)	—	.18 (4.5)	—
PFG-20B*	.79 (20)	.24 (6)	.43 (11)	.59 (15)	.49 (12.5)	.09 (2.3)	—	.28 (7)	—
PFG-30*	1.18 (30)	.24 (6)	.43 (11)	.55 (14)	.47 (12)	.08 (2)	—	.28 (7)	—
PFG-40*	1.57 (40)	.24 (6)	.43 (11)	.94 (24)	.55 (14)	.16 (4)	—	.28 (7)	—
PFG-50*	1.97(50)	.31 (8)	.79 (20)	1.06 (27)	.59 (15)	.14 (3.5)	—	.28 (7)	—
PFG-60*	2.36 (60)	M10x1.25	—	.79 (12.5)	.73 (18.5)	.20 (5)	—	.10 (2.5)	—
PFG-80*	3.15 (80)	M10x1.25	—	.79 (12.5)	.81 (20.5)	.24 (6)	—	.10 (2.5)	—
PFG-95*	3.74 (95)	M10x1.25	—	.79 (12.5)	.83 (21)	.24 (6)	—	.10 (2.5)	—
PFG-120*	4.72 (120)	.55 (14)	.55 (14)	.79 (20)	1.00 (25.5)	.24 (6)	4xØ8.7xØ40	.059 (1.5)	—
PFG-150*	5.91 (150)	.51(13)	.55 (14)	.79 (20)	1.28 (32.5)	.35 (9)	4xØ8.7xØ40	.059 (1.5)	—
PFG-200*	7.87 (200)	.51 (13)	.47 (12)	.79 (20)	1.48 (37.5)	.51 (13)	4xØ8.7xØ40	.059 (1.5)	—

Inches (mm)  
\* Cup material

**A**

Technical

PFG Flat

PBG Bellows

P5V-CFS Flat

PJG Short Bellows

PCG Multiple Bellows

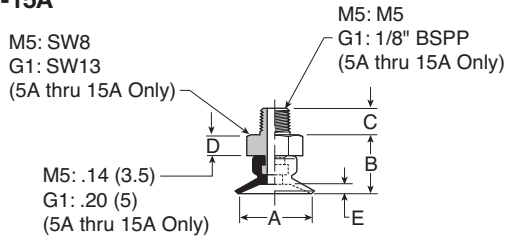
PUGB Flat Swivel

Cup Fittings

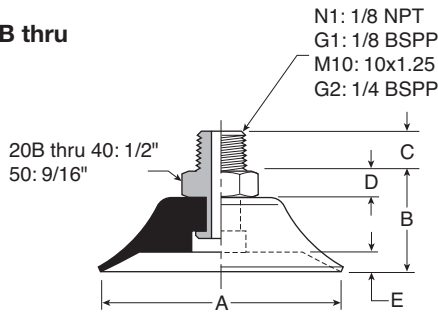


**A**

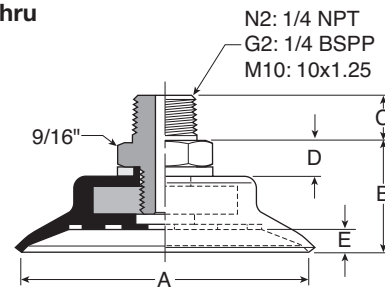
**PFTM-5A thru  
PFTM-15A**



**PFTM-20B thru  
PFTM-50**



**PFTM-60 thru  
PFTM-95**

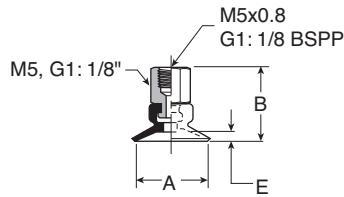


Model number	ØA	B	C (M3)	C (M5)	C (N1 / G1)	C (M10 / G2)	C (N2)	D	E
PFTM-5A-*†	.20 (5)	.39 (10)	—	.18 (4.5)	.31 (8)	—	—	See Dwg.	.31 (8)
PFTM-6A-*†	.24 (6)	.39 (10)	—	.18 (4.5)	.31 (8)	—	—	See Dwg.	.31 (8)
PFTM-8A-*†	.31 (8)	.41 (10.5)	—	.18 (4.5)	.31 (8)	—	—	See Dwg.	.05 (1.2)
PFTM-10A-*†	.39 (10)	.43 (11)	—	.18 (4.5)	.31 (8)	—	—	See Dwg.	.06 (1.5)
PFTM-15A-*†	.59 (15)	.45 (11.5)	—	.18 (4.5)	.31 (8)	—	—	See Dwg.	.08 (2)
PFTM-20B-*†	.79 (20)	.69 (17.5)	—	—	.31 (8)	.39 (10)	—	.20 (5)	.10 (2.5)
PFTM-30-*†	1.18 (30)	.67 (17)	—	—	.31 (8)	.39 (10)	—	.20 (5)	.08 (2)
PFTM-40-*†	1.57 (40)	.75 (19)	—	—	.31 (8)	.39 (10)	—	.20 (5)	.14 (3.5)
PFTM-50-*†	1.97 (50)	.79 (20)	—	—	.31 (8)	.39 (10)	—	.20 (5)	.16 (4)
PFTM-60-*†	2.36 (60)	.90 (23)	—	—	—	.39 (10)	.59 (15)	.28 (7)	.20 (5)
PFTM-80-*†	3.15 (80)	.98 (25)	—	—	—	.39 (10)	.59 (15)	.28 (7)	.24 (6)
PFTM-95-*†	3.74 (95)	1.00 (25.5)	—	—	—	.39 (10)	.59 (15)	.28 (7)	.24 (6)

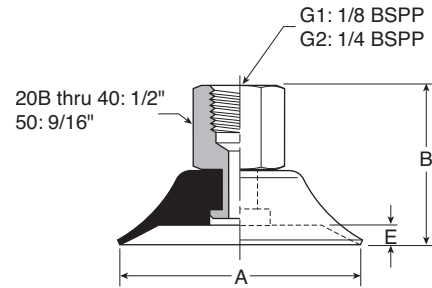
Inches (mm)  
\* Cup material  
† Thread size

**Dimensions**

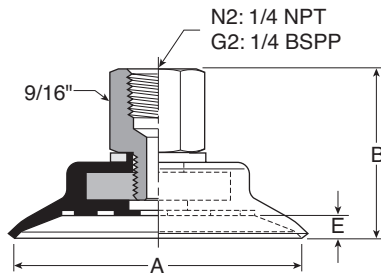
**PFTF-5A thru  
PFTF-15A**



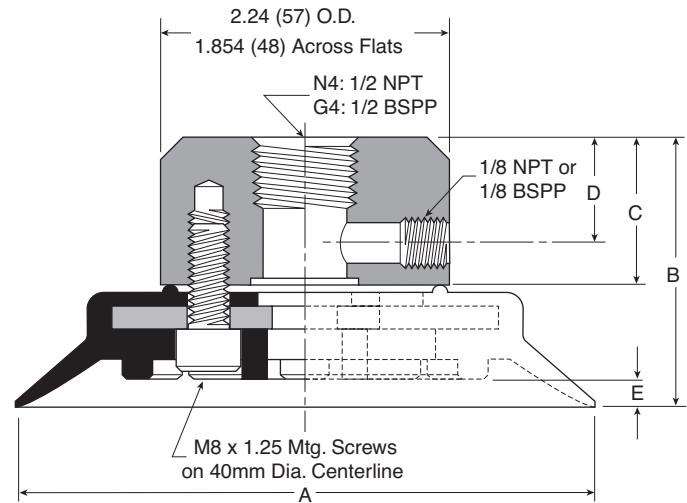
**PFTF-20B thru  
PFTF-50**



**PFTF-60 thru  
PFTF-95**



**PFTF-120 thru  
PFTF-200**



Model number	ØA	B	B (M5)	C	D	E
PFTF-5A-*.†	.20 (5)	.57 (14.5)	.81 (20.5)	—	—	.03 (.8)
PFTF-6A-*.†	.24 (6)	.57 (14.5)	.81 (20.5)	—	—	.03 (.8)
PFTF-8A-*.†	.31 (8)	.59 (15)	.83 (21)	—	—	.05 (1.2)
PFTF-10A-*.†	.39 (10)	.57 (14.5)	.81 (20.5)	—	—	.06 (1.5)
PFTF-15A-*.†	.59 (15)	.63 (16)	.87 (22)	—	—	.08 (2)
PFTF-20B-*.†	.79 (20)	1.04 (26.5)	—	—	—	.10 (2.5)
PFTF-30-*.†	1.18 (30)	1.02 (26)	—	—	—	.08 (2)
PFTF-40-*.†	1.57 (40)	1.10 (28)	—	—	—	.16 (4)
PFTF-50-*.†	1.97 (50)	1.14 (29)	—	—	—	.16 (4)
PFTF-60-*.†	2.36 (60)	1.40 (35.5)	—	—	—	.20 (5)
PFTF-80-*.†	3.15 (80)	1.48 (37.5)	—	—	—	.24 (6)
PFTF-95-*.†	3.74 (95)	1.50 (38)	—	—	—	.24 (6)
PFTF-120-*.†	4.72 (120)	1.83 (46.5)	—	.94 (24)	.51 (13)	.24 (6)
PFTF-150-*.†	5.91 (150)	2.11 (53.5)	—	.94 (24)	.51 (13)	.35 (9)
PFTF-200-*.†	7.87 (200)	2.30 (58.5)	—	.94 (24)	.51 (13)	.51 (13)

Inches (mm)  
\* Cup material  
† Thread size

<b>A</b>
Technical
PFG Flat
PBG Bellows
P5V-CFS Flat
PJG Short Bellows
PCG Multiple Bellows
PUGB Flat Swivel
Cup Fittings

**Dimensions**

**A**

Technical

PFG  
Flat

PBG  
Bellows

PSV-CFS  
Flat

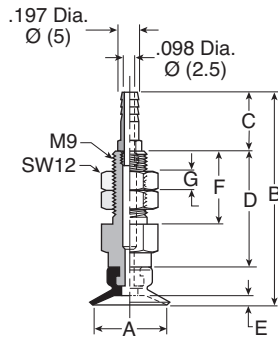
PJG Short  
Bellows

PCG  
Multiple  
Bellows

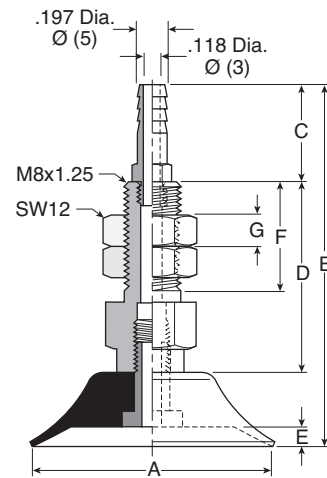
PUGB  
Flat Swivel

Cup  
Fittings

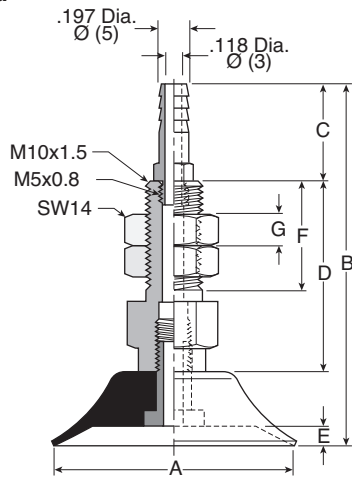
**PFTK-5A thru  
PFTK-10A**



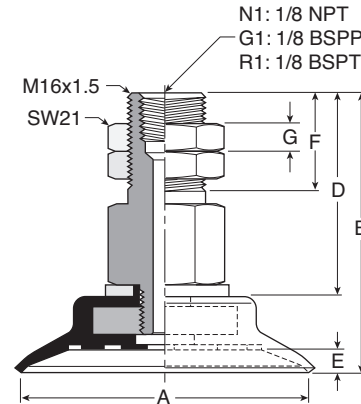
**PFTK-15 thru  
PFTK-20**



**PFTK-30 thru  
PFTK-50**



**PFTK-60 thru  
PFTK-95**

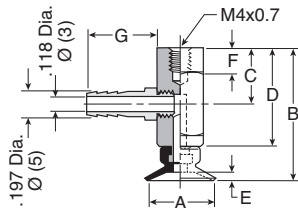


Model number	ØA	B	C	D	E	F	G	Wt oz. (g)
PFTK-5A-*	.20 (5)	1.20 (30.5)	.39 (10)	.55 (14)	.03 (.8)	.61 (15.5)	.12 (3)	.39 (11)
PFTK-6A-*	.24 (6)	1.20 (30.5)	.39 (10)	.55 (14)	.03 (.8)	.61 (15.5)	.12 (3)	.39 (11)
PFTK-8A-*	.31 (8)	1.22 (31)	.39 (10)	.55 (14)	.05 (1.2)	.61 (15.5)	.12 (3)	.39 (11)
PFTK-10A-*	.39 (10)	1.81 (46)	.63 (16)	.88 (22.5)	.06 (1.5)	.61 (15.5)	.12 (3)	.53 (15)
PFTK-15-*	.59 (15)	1.81 (46)	.63 (16)	.86 (22)	.07 (1.9)	.59 (15)	.12 (3)	.71 (20)
PFTK-20-*	.79 (20)	1.89 (48)	.63 (16)	.86 (22)	.09 (2.3)	.59 (15)	.20 (5)	.71 (20)
PFTK-30-*	1.18 (30)	2.36 (60)	.63 (16)	1.26 (32)	.08 (2)	.71 (20)	.20 (5)	1.41 (40)
PFTK-40-*	1.57 (40)	2.44 (62)	.63 (16)	1.26 (32)	.14 (3.5)	.71 (20)	.20 (5)	1.41 (40)
PFTK-50-*	1.97 (50)	2.48 (63)	.63 (16)	1.26 (32)	.16 (4)	.71 (20)	.20 (5)	1.77 (50)
PFTK-60- <sup>†</sup>	2.36 (60)	2.30 (58.5)	—	1.67 (42.5)	.20 (5)	.79 (20)	.24 (6)	4.59 (130)
PFTK-80- <sup>†</sup>	3.15 (80)	2.38 (60.5)	—	1.67 (42.5)	.24 (6)	.79 (20)	.24 (6)	6.00 (170)
PFTK-95- <sup>†</sup>	3.74 (95)	2.40 (61)	—	1.67 (42.5)	.24 (6)	.79 (20)	.24 (6)	7.77 (220)

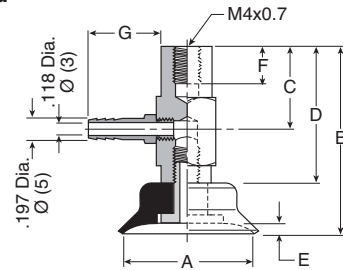
Inches (mm)  
 \* Cup material  
<sup>†</sup> Vacuum port

**Dimensions**

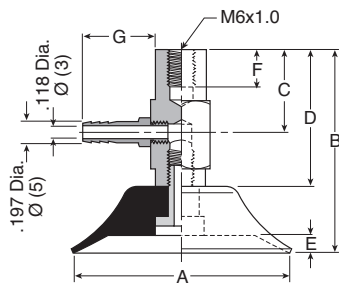
**PFYK-5A thru  
 PFYK-10A**



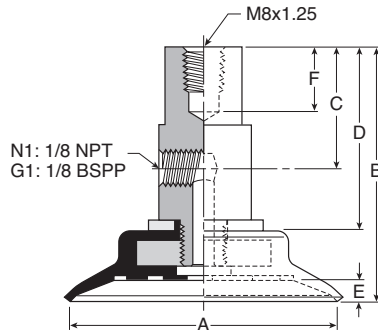
**PFYK-15 thru  
 PFYK-20**



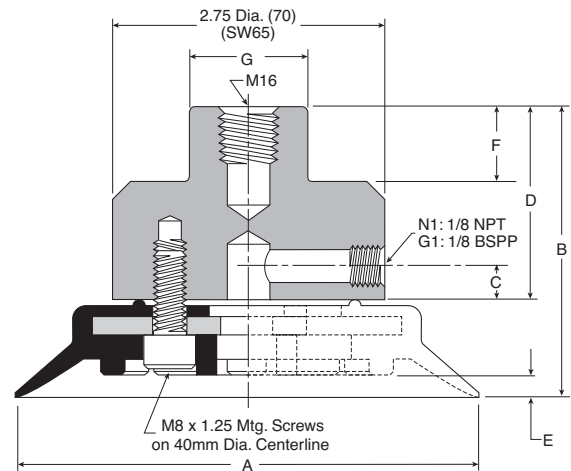
**PFYK-30 thru  
 PFYK-50**



**PFYK-60 thru  
 PFYK-95**



**PFYK-120 thru  
 PFYK-200**



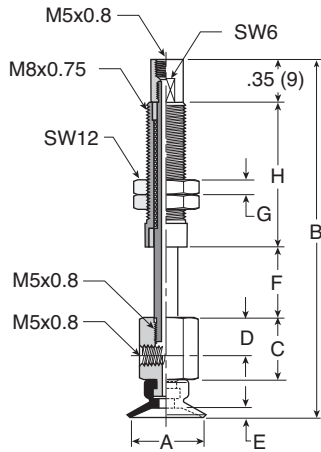
Model number	ØA	B	C	D	E	F	G	Wt oz (g)
PFYK-5A-*	.20 (5)	1.14 (29)	.51 (13)	.89 (22.5)	.03 (.8)	.24 (6)	.63 (16)	.56 (16)
PFYK-6A-*	.24 (6)	1.14 (29)	.51 (13)	.89 (22.5)	.03 (.8)	.24 (6)	.63 (16)	.56 (16)
PFYK-8A-*	.31 (8)	1.16 (29.5)	.51 (13)	.89 (22.5)	.05 (1.2)	.24 (6)	.63 (16)	.56 (16)
PFYK-10A-*	.39 (10)	1.18 (30)	.51 (13)	.89 (22.5)	.06 (1.5)	.24 (6)	.63 (16)	.56 (16)
PFYK-15-*	.59 (15)	1.18 (30)	.55 (14)	.87 (22)	.07 (1.9)	.24 (6)	.63 (16)	.71 (20)
PFYK-20-*	.79 (20)	1.26 (32)	.55 (14)	.87 (22)	.09 (2.3)	.24 (6)	.63 (16)	.71 (20)
PFYK-30-*	1.18 (30)	1.73 (44)	.79 (20)	1.26 (32)	.08 (2)	.31 (8)	.63 (16)	1.41 (40)
PFYK-40-*	1.57 (40)	1.81 (46)	.79 (20)	1.26 (32)	.14 (3.5)	.31 (8)	.63 (16)	1.77 (50)
PFYK-50-*	1.97 (50)	1.85 (47)	.79 (20)	1.26 (32)	.16 (4)	.31 (8)	.63 (16)	1.94 (55)
PFYK-60-*.†	2.36 (60)	2.30 (58.5)	1.10 (28)	1.57 (40)	.20 (5)	.43 (11)	—	4.24 (120)
PFYK-80-*.†	3.15 (80)	2.38 (60.5)	1.10 (28)	1.57 (40)	.24 (6)	.43 (11)	—	5.65 (160)
PFYK-95-*.†	3.74 (95)	2.40 (61)	1.10 (28)	1.57 (40)	.24 (6)	.43 (11)	—	7.42 (210)
PFYK-120-*.†	4.72 (120)	2.94 (75.5)	.47 (12)	1.97 (50)	.24 (6)	.79 (20)	1.18 Dia. (30)	22.6 (640)
PFYK-150-*.†	5.91 (150)	3.25 (82.5)	.47 (12)	1.97 (50)	.35 (9)	.79 (20)	1.18 Dia. (30)	32.1 (910)
PFYK-200-*.†	7.87 (200)	3.44 (87.5)	.47 (12)	1.97 (50)	.51 (13)	.79 (20)	1.18 Dia. (30)	42.4 (1200)

Inches (mm)  
 \* Cup material  
 † Vacuum port

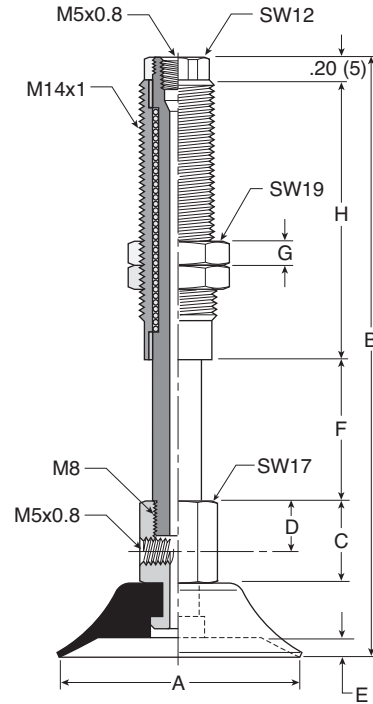
<b>A</b>
Technical
PFG Flat
PBG Bellows
P5V-CFS Flat
PJG Short Bellows
PCG Multiple Bellows
PUGB Flat Swivel
Cup Fittings

**Dimensions**

**PFTYS5A thru  
PFTYS15A**



**PFTYS20B thru  
PFTYS50**

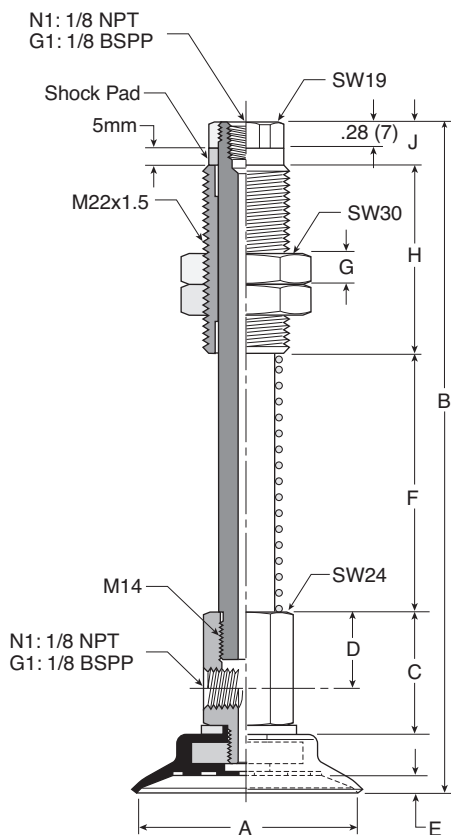


Model number	ØA	B	C	D	E	F	G	H	Wt oz (g)
PFTYS5A10 <sup>††</sup>	.20 (5)	2.42 (61.5)	.51 (13)	.31 (8)	.03 (.8)	.39 (10)	.12 (3)	.91 (23)	.65 (18.5)
PFTYS5A15 <sup>††</sup>	.20 (5)	2.91 (74)	.51 (13)	.31 (8)	.03 (.8)	.59 (15)	.12 (3)	1.20 (30.5)	.74 (21)
PFTYS6A10 <sup>††</sup>	.24 (6)	2.42 (61.5)	.51 (13)	.31 (8)	.03 (.8)	.39 (10)	.12 (3)	.91 (23)	.65 (18.5)
PFTYS6A15 <sup>††</sup>	.24 (6)	2.91 (74)	.51 (13)	.31 (8)	.03 (.8)	.59 (15)	.12 (3)	1.20 (30.5)	.74 (21)
PFTYS8A10 <sup>††</sup>	.31 (8)	2.44 (62)	.51 (13)	.31 (8)	.05 (1.2)	.39 (10)	.12 (3)	.91 (23)	.65 (18.5)
PFTYS8A15 <sup>††</sup>	.31 (8)	2.93 (74.5)	.51 (13)	.31 (8)	.05 (1.2)	.59 (15)	.12 (3)	1.20 (30.5)	.74 (21)
PFTYS10A10 <sup>††</sup>	.39 (10)	2.48 (63)	.51 (13)	.31 (8)	.06 (1.5)	.39 (10)	.12 (3)	.91 (23)	.65 (18.5)
PFTYS10A15 <sup>††</sup>	.39 (10)	2.95 (75)	.51 (13)	.31 (8)	.06 (1.5)	.59 (15)	.12 (3)	1.20 (30.5)	.74 (21)
PFTYS15A10 <sup>††</sup>	.59 (15)	2.50 (63.5)	.51 (13)	.31 (8)	.08 (2)	.39 (10)	.12 (3)	.91 (23)	.65 (18.5)
PFTYS15A15 <sup>††</sup>	.59 (15)	2.97 (75.5)	.51 (13)	.31 (8)	.08 (2)	.59 (15)	.12 (3)	1.20 (30.5)	.74 (21)
PFTYS20B15 <sup>††</sup>	.79 (20)	3.37 (85.5)	.67 (17)	.39 (10)	.09 (2.3)	.59 (15)	.20 (5)	1.42 (36)	2.5 (71)
PFTYS20B30 <sup>††</sup>	.79 (20)	4.82 (122.5)	.67 (17)	.39 (10)	.09 (2.3)	1.18 (30)	.20 (5)	2.28 (58)	3.4 (96)
PFTYS3015 <sup>††</sup>	1.18 (30)	3.35 (85)	.67 (17)	.39 (10)	.08 (2)	.59 (15)	.20 (5)	1.42 (36)	2.5 (72)
PFTYS3030 <sup>††</sup>	1.18 (30)	4.80 (122)	.67 (17)	.39 (10)	.08 (2)	1.18 (30)	.20 (5)	2.28 (58)	3.5 (97)
PFTYS4015 <sup>††</sup>	1.57 (40)	3.43 (87)	.67 (17)	.39 (10)	.14 (3.5)	.59 (15)	.20 (5)	1.42 (36)	2.7 (76)
PFTYS4030 <sup>††</sup>	1.57 (40)	4.88 (124)	.67 (17)	.39 (10)	.14 (3.5)	1.18 (30)	.20 (5)	2.28 (58)	3.6 (101)
PFTYS5015 <sup>††</sup>	1.97 (50)	3.46 (88)	.67 (17)	.39 (10)	.16 (4)	.59 (15)	.20 (5)	1.42 (36)	3.0 (85)
PFTYS5030 <sup>††</sup>	1.97 (50)	4.92 (125)	.67 (17)	.39 (10)	.16 (4)	1.18 (30)	.20 (5)	2.28 (58)	3.9 (110)

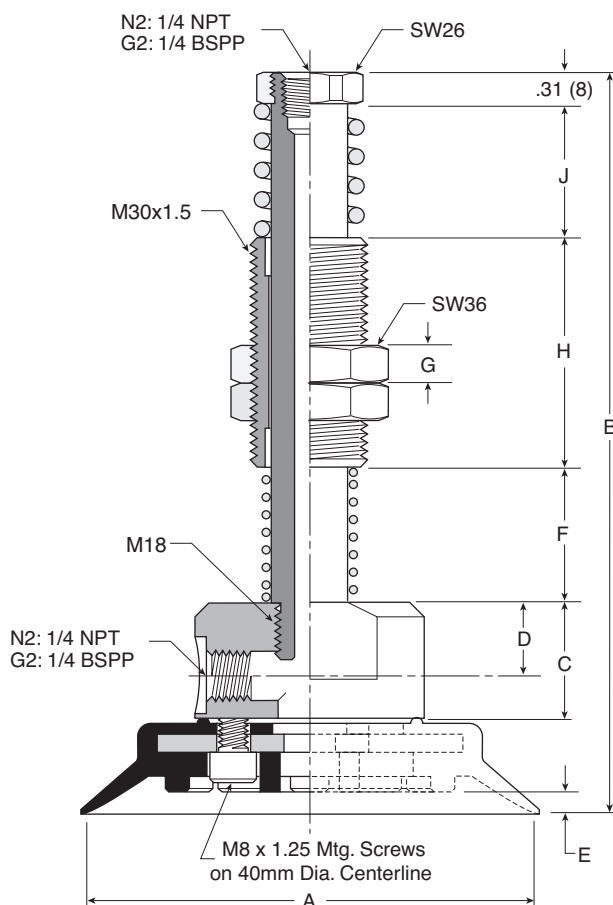
Inches (mm)  
<sup>\*</sup> Cup material  
<sup>†</sup> Vacuum port

**Dimensions**

**PFTYS60 thru  
PFTYS95**



**PFTYS120 thru  
PFTYS200**



<b>A</b>
Technical
PFG Flat
PBG Bellows
P5V-CFS Flat
PJG Short Bellows
PCG Multiple Bellows
PUGB Flat Swivel
Cup Fittings

Model number	ØA	B	C	D	E	F	G	H	J	Wt oz (g)
PFTYS6030 <sup>††</sup>	2.36 (60)	6.02 (153)	1.28 (32.5)	.78 (20)	.20 (5)	1.77 (45)	.39 (10)	1.97 (50)	.47 (12)	9.7 (282)
PFTYS6050 <sup>††</sup>	2.36 (60)	7.01 (178)	1.28 (32.5)	.78 (20)	.20 (5)	2.76 (70)	.39 (10)	1.97 (50)	.47 (12)	11.2 (316)
PFTYS8030 <sup>††</sup>	3.15 (80)	6.10 (155)	1.28 (32.5)	.78 (20)	.24 (6)	1.77 (45)	.39 (10)	1.97 (50)	.47 (12)	11 (310)
PFTYS8050 <sup>††</sup>	3.15 (80)	7.09 (180)	1.28 (32.5)	.78 (20)	.24 (6)	2.76 (70)	.39 (10)	1.97 (50)	.47 (12)	12.2 (344)
PFTYS9530 <sup>††</sup>	3.74 (95)	6.12 (156)	1.28 (32.5)	.78 (20)	.24 (6)	1.77 (45)	.39 (10)	1.97 (50)	.47 (12)	12.4 (350)
PFTYS9550 <sup>††</sup>	3.74 (95)	7.11 (181)	1.28 (32.5)	.78 (20)	.24 (6)	2.76 (70)	.39 (10)	1.97 (50)	.47 (12)	13.6 (384)
PFTYS12020 <sup>††</sup>	4.72 (120)	7.56 (192)	1.28 (32.5)	.71 (18)	.24 (6)	1.38 (35)	.39 (10)	2.36 (60)	1.38 (35)	41.2 (1165)
PFTYS12070 <sup>††</sup>	4.72 (120)	10.12 (257)	1.28 (32.5)	.71 (18)	.24 (6)	3.94 (100)	.39 (10)	2.36 (60)	1.38 (35)	44 (1246)
PFTYS15020 <sup>††</sup>	5.91 (150)	7.83 (199)	1.28 (32.5)	.71 (18)	.35 (9)	1.38 (35)	.39 (10)	2.36 (60)	1.38 (35)	49 (1389)
PFTYS15070 <sup>††</sup>	5.91 (150)	10.39 (264)	1.28 (32.5)	.71 (18)	.35 (9)	3.94 (100)	.39 (10)	2.36 (60)	1.38 (35)	52 (1471)
PFTYS20020 <sup>††</sup>	7.87 (200)	8.03 (204)	1.28 (32.5)	.71 (18)	.51 (13)	1.38 (35)	.39 (10)	2.36 (60)	1.38 (35)	62 (1755)
PFTYS20070 <sup>††</sup>	7.87 (200)	10.59 (269)	1.28 (32.5)	.71 (18)	.51 (13)	3.94 (100)	.39 (10)	2.36 (60)	1.38 (35)	64.9 (1836)

Inches (mm)  
<sup>\*</sup> Cup material  
<sup>†</sup> Vacuum port